

Here to help.....



At St. Ronan's Primary School, we believe that children learn better with a good start to their day and this means a healthy breakfast.

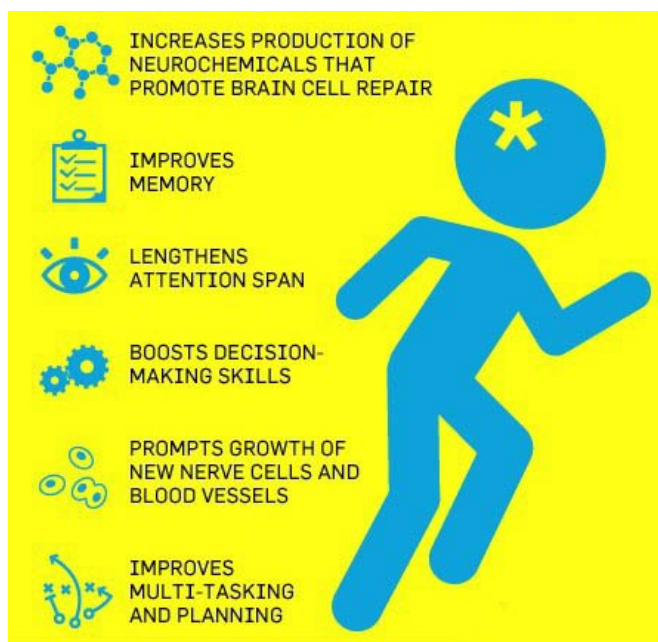
Mornings can be rushed trying to get everyone ready and out of the door on time, so our breakfast club is here to help.

For busy parents we are able to provide a secure, adult supervised, Breakfast Club for your child, before normal school hours (8.10am—8.40am).

We offer approximately 20 places for children attending the Primary School during term time only, on a trial basis (from Jan to mid term Feb).

REMEMBER

The benefits of a good healthy breakfast are.....



TRIAL PERIOD

(Mon 16th Jan—Fri 10th Feb)

St. Ronan's
Primary School
(NEWRY)

Tel: 028 3026 4996

Principal : Mr K Donaghy

St. Ronan's Primary School (NEWRY)

BREAKFAST CLUB



FROM:

8.10am until 8.50am....only children going to breakfast Club should be in School from 8.10—8.30am... £1day (paid on day)

TRIAL PERIOD

(Mon 16th Jan—Fri 10th Feb)

Email: info@stronans.newry.ni.sch.uk

Web: www.stronansnewry.com

Twitter: @stronansps

BREAKFAST! the most important meal of the day.....

Breakfast Club



At breakfast club we aim to provide your child with a healthy start to the day in a stimulating and caring environment.

During the trial period the breakfast club will be available to ALL our pupils (P1—P7).



Times and Fees

Breakfast Club starts at 8.10am every morning from Monday to Friday and ends at the start of the school day— 8.50am

PLEASE NOTE: Children NOT going to BREAKFAST CLUB should NOT be in school before 8.30am.

Each session costs £1per child per day.

(PAYABLE ON THE DAY)

This is a fixed price and we cannot offer reduced fees for later starts or shorter sessions.

Do come in and talk to Mr. Donaghy if you have any further questions or drop us an email.



Breakfast Menu

We endeavour to offer children a variety of healthy breakfast foods.

Breakfast is available to ALL pupils from 8.10am until 8.50am for only £1 per day per pupil.

We offer:

Juice/Milk + cereal + toast+ fruit



We are always happy to hear from parents if you any menu suggestions or ideas.

Please note that we abide by school allergy policies and cannot always cater for individual needs and preferences.